



Asian Elephants in tourism

Community solutions in Thailand

Sarah Blaine

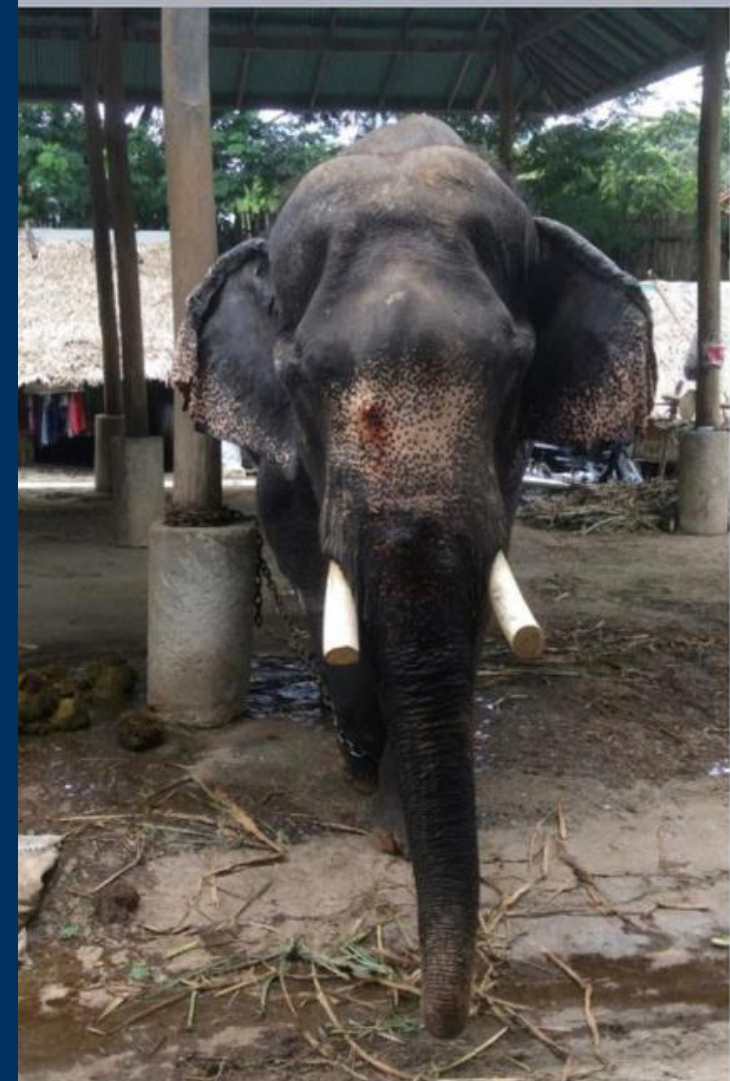
 **mahouts**
ELEPHANT FOUNDATION

Silent victims



Typical Elephant Tourism activities:

- Painting
- Bathing
- Riding
- Circus style performances



Consequences

Physical and Psychological Suffering

Social Isolation

Lack of access to their natural diet

Unable to move

Silent Victims....



The wrong side of history

Unethical Wildlife Tourism The Wrong Side of History



Taken for a ride

The conditions for elephants used in tourism in Asia



Science & Environment

Elephant tourism is 'fuelling cruelty'



How ethical is the elephant 'sanctuary' you're visiting?

The New York Times

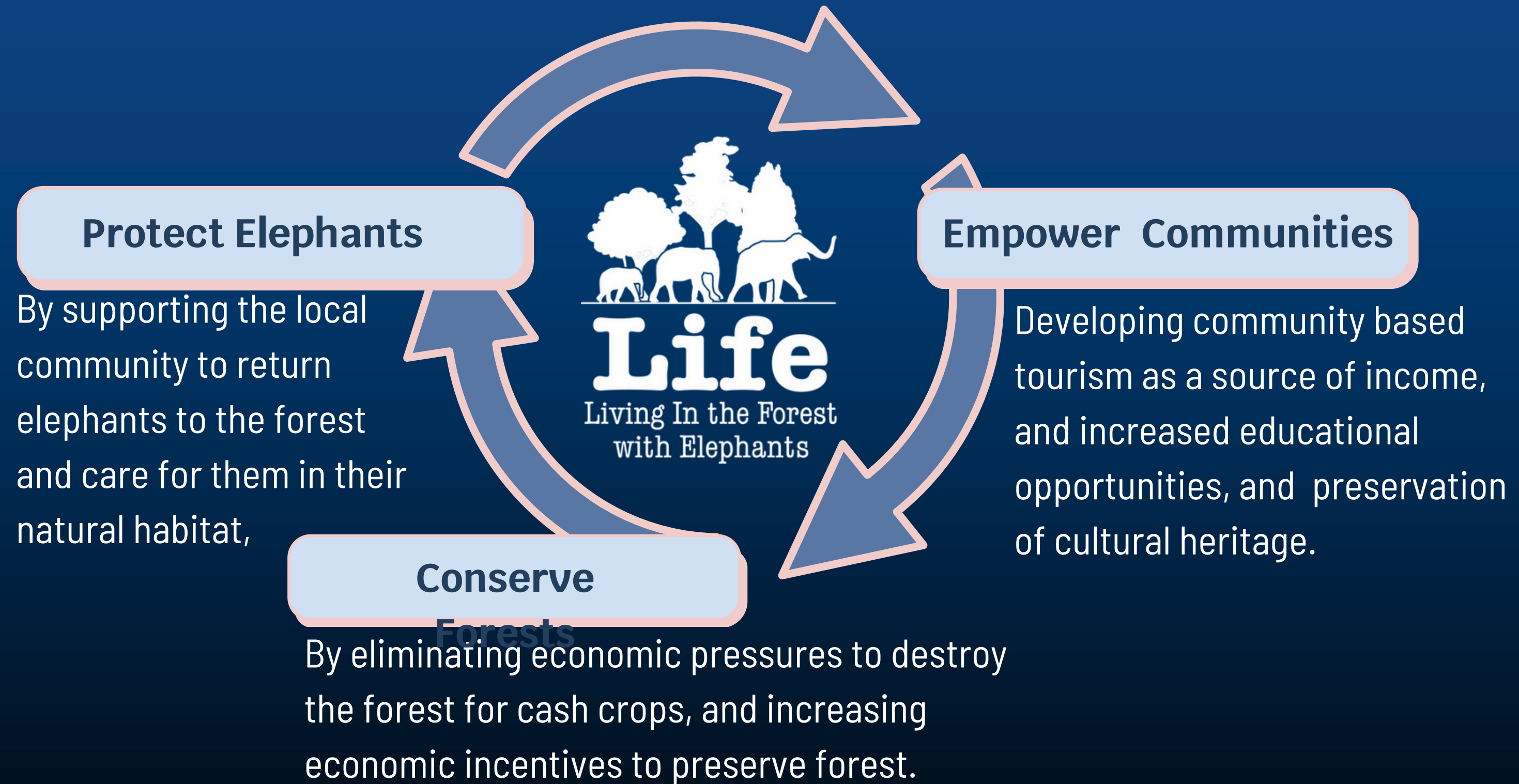
In Thailand, You Can Ride an Elephant. But Should You?

Interacting with the animals is one of the country's major tourism draws, and a new organization is trying to make it more humane.



Our Model

The theory of change



Meet the elephants!



Community Based Tourism



Visitor experience: elephant Observation



Research and field course

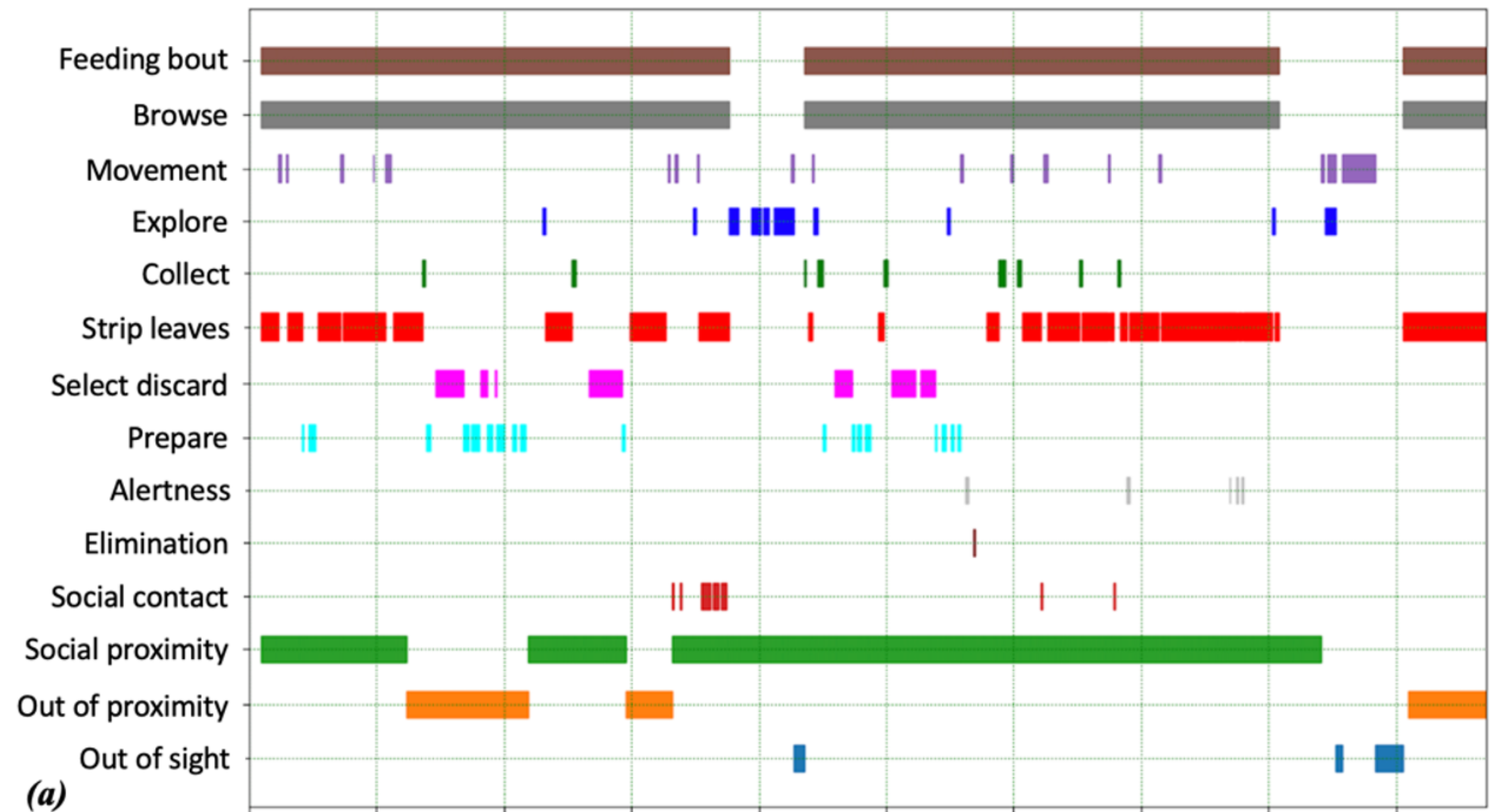


Research Program

Elephant Centered, Evidence Based, Interdisciplinary



Time Budget during a feeding bout showing co-occurring behaviors

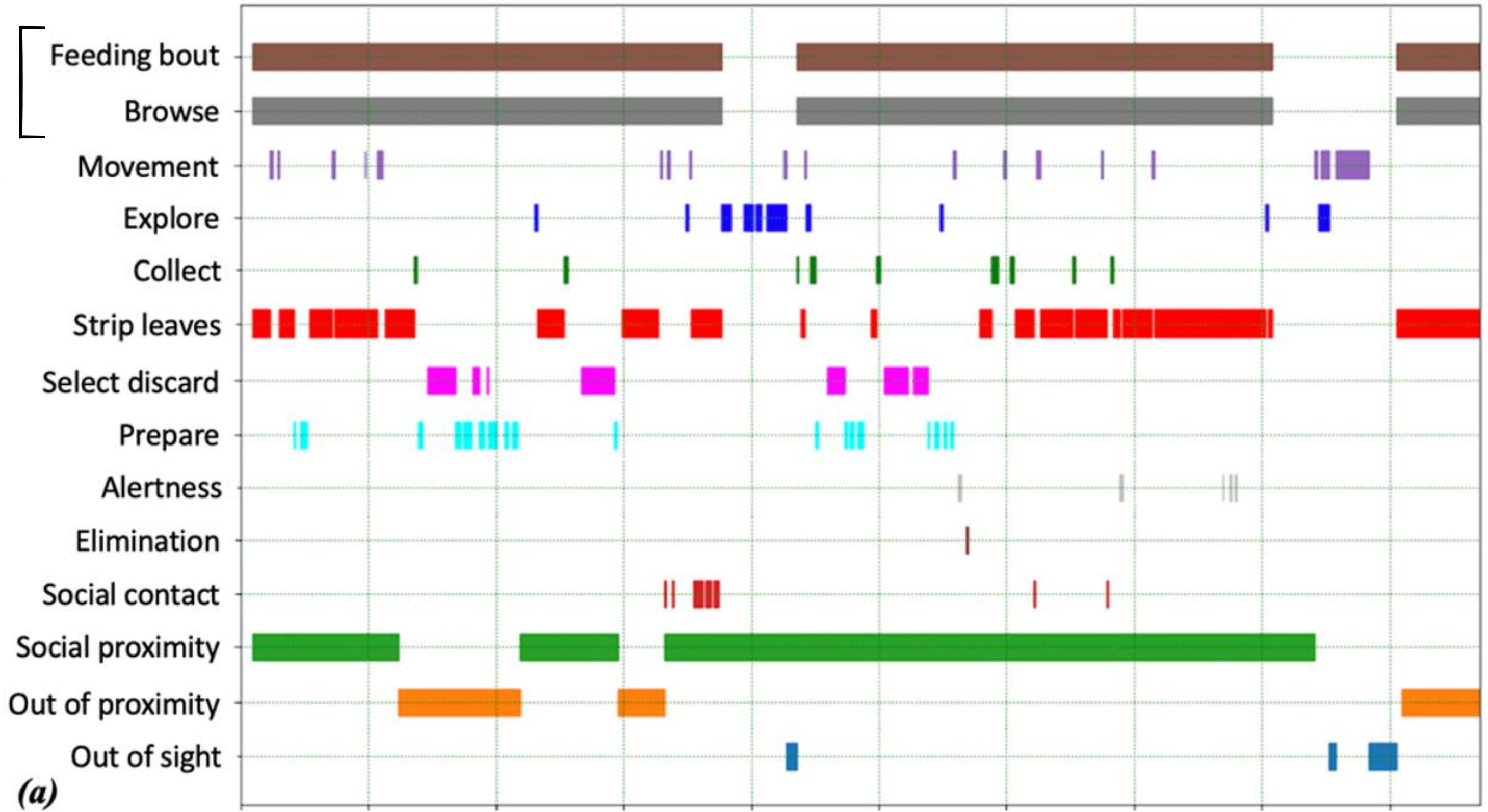


Credit: Liv Baker 2022

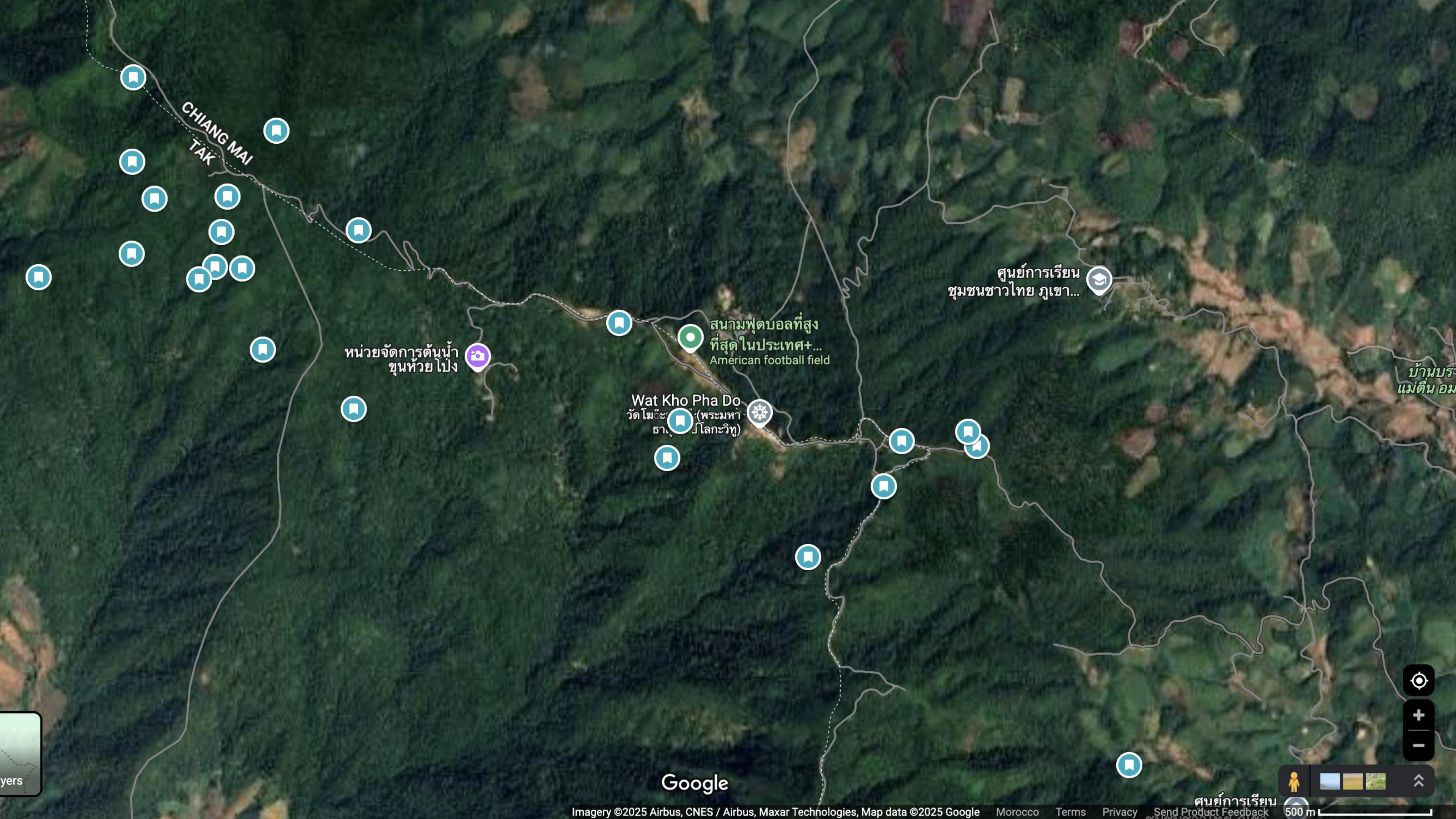
Elapsed Time

Paying Attention to what is meaningful for elephants

SO much more than simple calorie intake is happening while elephants forage



Liv Baker PhD MSc and Chelsea Greer MSc
(2022)



CHIANG MAI
TAK

หน่วยจัดการต้นน้ำ
ขุนห้วยโป่ง

สนามฟุตบอลที่สูง
ที่สุดในประเทศ+...
American football field

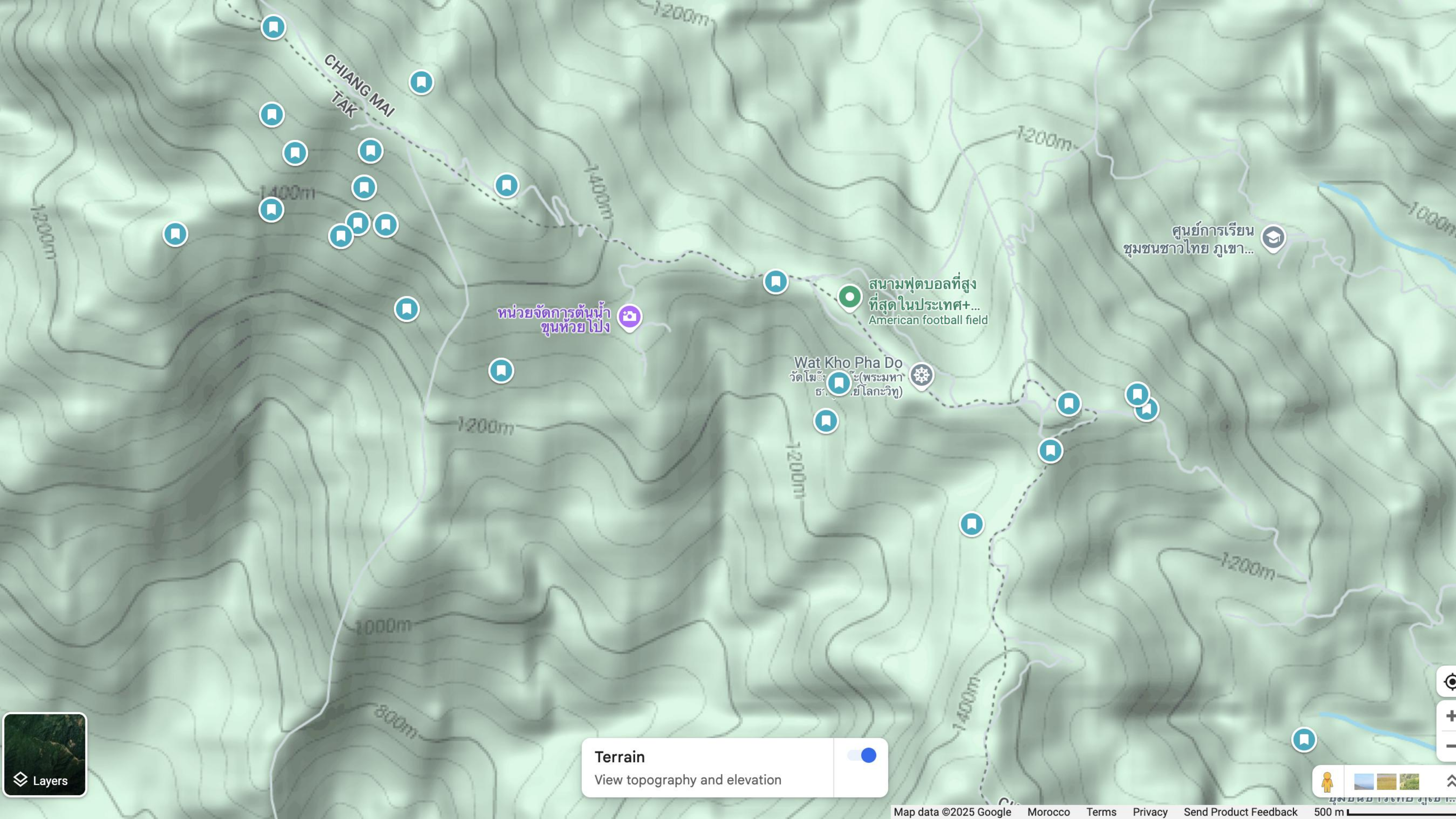
Wat Kho Pha Do
วัดโฆะ (พระมหา
ธาตุนภเมทนีดล)
วัดโฆะวิฑู

ศูนย์การเรียนรู้
ชุมชนชาวไทยภูเขา...

บ้านบร...
แม่ตั้น อม...

Google

ศูนย์การเรียนรู้



Terrain

View topography and elevation

Map navigation controls including a compass, zoom in (+) and zoom out (-) buttons, a person icon, and a scale bar.

A scalable model



ACT NOW TO HELP US SAVE
**PALATHA'S
LAST
ELEPHANTS**
<https://chuffed.org/project/save-palathas-elephants>



CREATING A WORLD WHERE **ELEPHANTS • COMMUNITY • FOREST** THRIVE TOGETHER

Palatha's last elephants





The importance of a highly skilled team



Decades of combined experience:

- mahout expertise
- elephant and tourism knowledge
 - indigenous people expertise
- community based tourism experts
 - anthropology
 - social science
 - psychology
 - human rights experts
- animal welfare, conservation, and animal behavior

**Founded on patience and peace.
Built through hard work and trust.**

